

**"The Menalto": a Modern Cottage**  
**Plan ID: A401**

**The Basics:** 930 Square feet | 2 Bedrooms |  
2 Bath | 0 Garage stalls | 1 Level

**Features:**

- Dramatic contemporary design within economical footprint
- Warm, organic minimalism: Wood & other natural materials used within cutting-edge aesthetic
- Corner bay windows: Unique corner cantilever for window seats, with skylight above
- Clerestory corner windows above kitchen, and small windows b/w upper and lower kitchen cabinets
- Open, light-filled floor plan with contemporary detailing
- May be expanded to 2118 square foot home (see plan B401)



**Specs:**

**Total living area:** 930 sq ft.

**Unconditioned area:**

**Garage stalls:** 0

**Covered front porch:** 75 sq. ft.

**Number of Rooms:**

**Bedrooms:** 2

**Full Baths:** 2

**Half Baths:** 0

**Number of Stories:** 1

**Dimensions:**

**Width:** 33'-0"

**Depth:** 36'-0"

**Height:** 15'-2"

**Ceiling heights:** Various: 9' flat and vaulted

**Roof:**

**Pitch (main):** 1.5:12

**Framing:** Stick

**Type:** Double lock standing seam roof with a 2" vertical seam height

**Exterior Wall Construction:** 2x6

**Exterior Materials:**

- Smooth-finish 3-coat stucco w/ smooth or sand float finish
- Tongue-in-groove clear cedar siding, stained prior to installation
- Copper fascia
- Metal windows

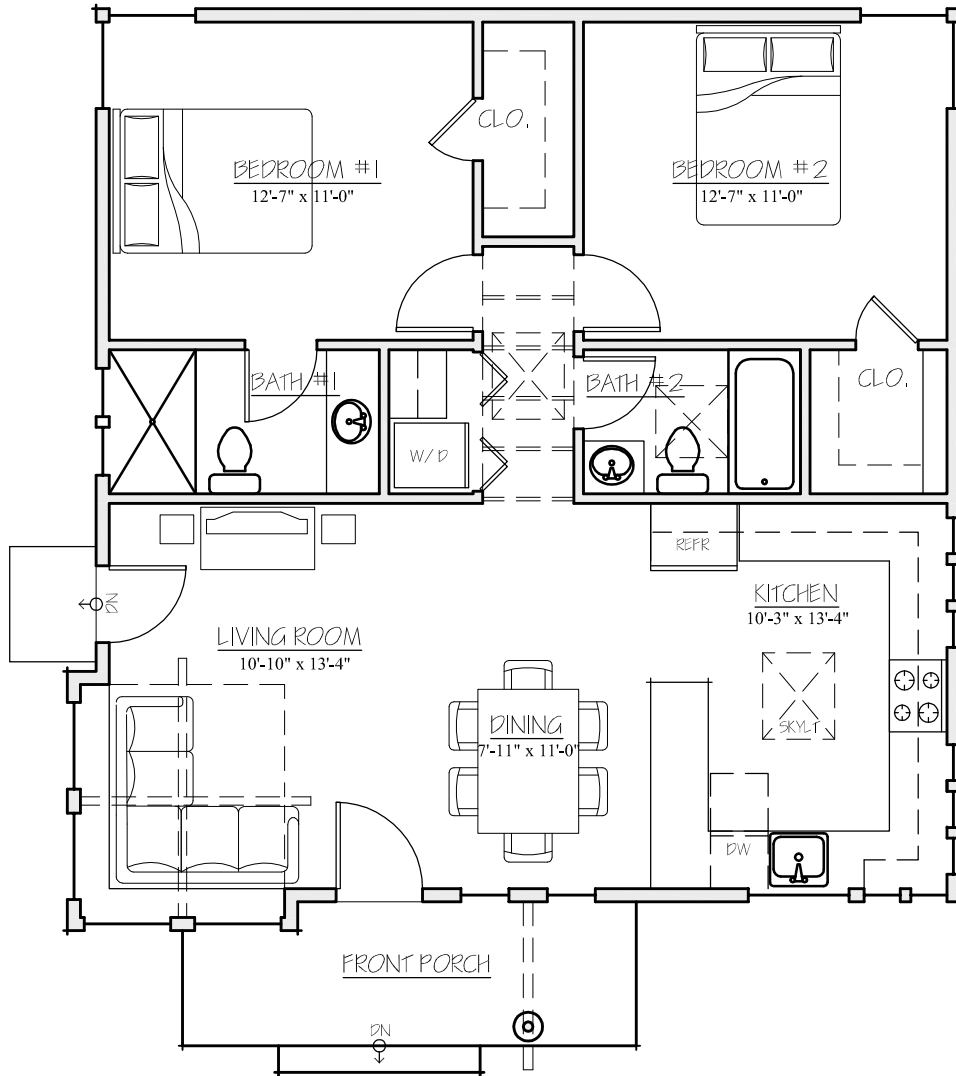


# MADSON DESIGN

REMODELS - ADDITIONS - NEW HOMES

James N. Madson  
[www.madsondesign.com](http://www.madsondesign.com)

Email: [james@madsondesign.com](mailto:james@madsondesign.com)  
Office: 415-334-2291 \* Cell: 916-996-3922



**A401: Floorplan**  
**© Madson Design**